

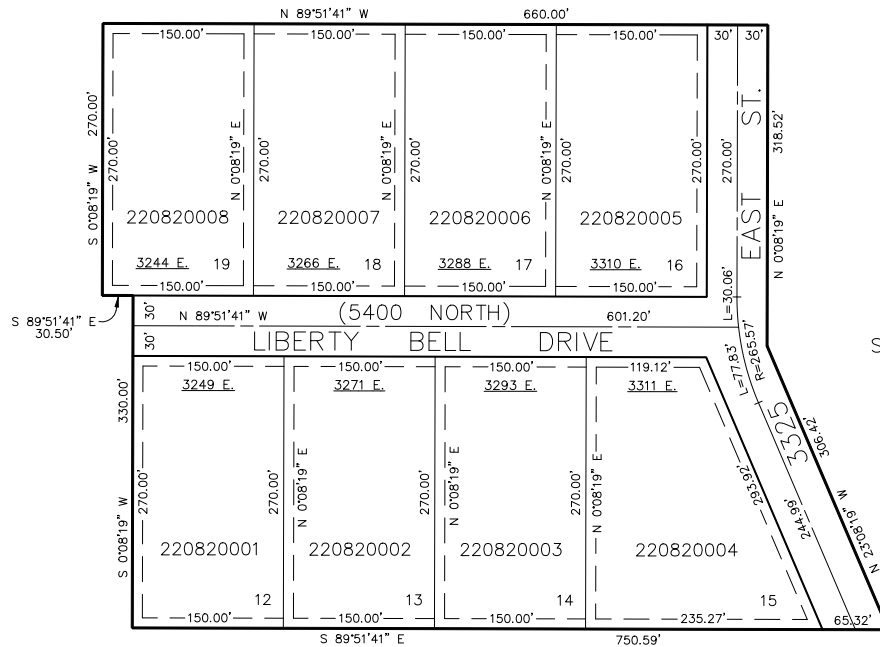
PART OF SECTION 8, T.7N., R.1E., S.L.B. & M.
LIBERTY BELL RANCHETTES SUBDIVISION – PHASE 2

IN WEBER COUNTY

SCALE 1" = 100'

TAXING UNIT: 36

SEE PAGE 5



SEE PAGE 72

SEE PAGE 5

SEE PAGE 77

SEE PAGE 78

NOTE: 10' UTILITY EASEMENTS EACH
SIDE OF PROPERTY LINE AS INDICATED
BY DASHED LINES. ALL EASEMENTS TO
BE USED FOR IRRIGATION WATERLINES,
POWERLINES, TELEPHONE LINES, AND
OTHER PUBLIC UTILITIES.

FOR COMPLETE ENG DATA SEE
ORIGINAL DEDICATION PLAT IN
BOOK 22, PAGE 93 OF RECORDS.